

Pleated and Tucked Turban



Materials needed:

- Fabric 40cm (145cm or wider) stretch fabric – polyester or a cotton and polyester blend (cooler in summer)
- Matching thread
- Seam allowance – 1.5cm

Preparation:

- Wash and dry your fabric • Iron if needed

Cutting:

Cut across the width of the fabric the following for the size turban you are making (you may want to make a cardboard template to use)

Small

- One rectangle 52cm x 20cm – Turban
- One rectangle 48cm x 12.5cm – Band
- One rectangle 12.5cm x 10cm – Tab

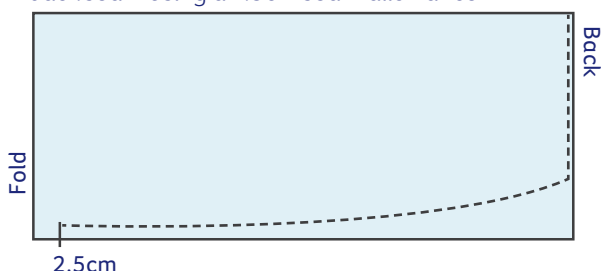
Medium

- One rectangle 56cm x 23cm – Turban
- One rectangle 54cm x 12.5cm – Band
- One rectangle 12.5cm x 10cm – Tab

- Using the pattern, cut out the Turban. Fold the Turban rectangle in half and cut out using the pattern template

Sewing:

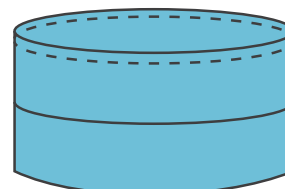
- With the right sides together, sew the ends of the bands together using a straight stitch. Open the seam and press flat.
- Fold the band lengthwise right sides together
- Fold the rectangle for the turban in half, right sides together across the short side. Mark 2.5cm from the fold with a fabric pencil (or pin). Sew from this mark around the curve to the back seam using a 1.5cm seam allowance



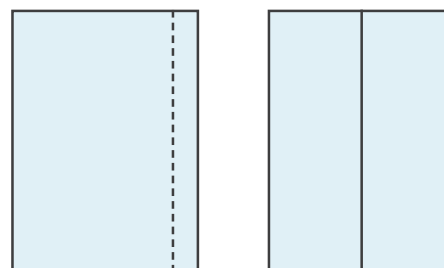
- Turn the turban inside out and open the seam allowance at the back of the turban (press open if needed). Pin three tucks approximately 2cm deep at the back. Stitch along the back seam of the turban to secure the tucks

| | |
|--|-----------|
| | Back seam |
| | Tuck 1 |
| | Tuck 2 |
| | Tuck 3 |
| | |

- Pin the band to the outside of the turban matching the back seams and centre fronts. Sew the band onto the turban. Seam can be overlocked or zig-zag stitched to finish if desired.



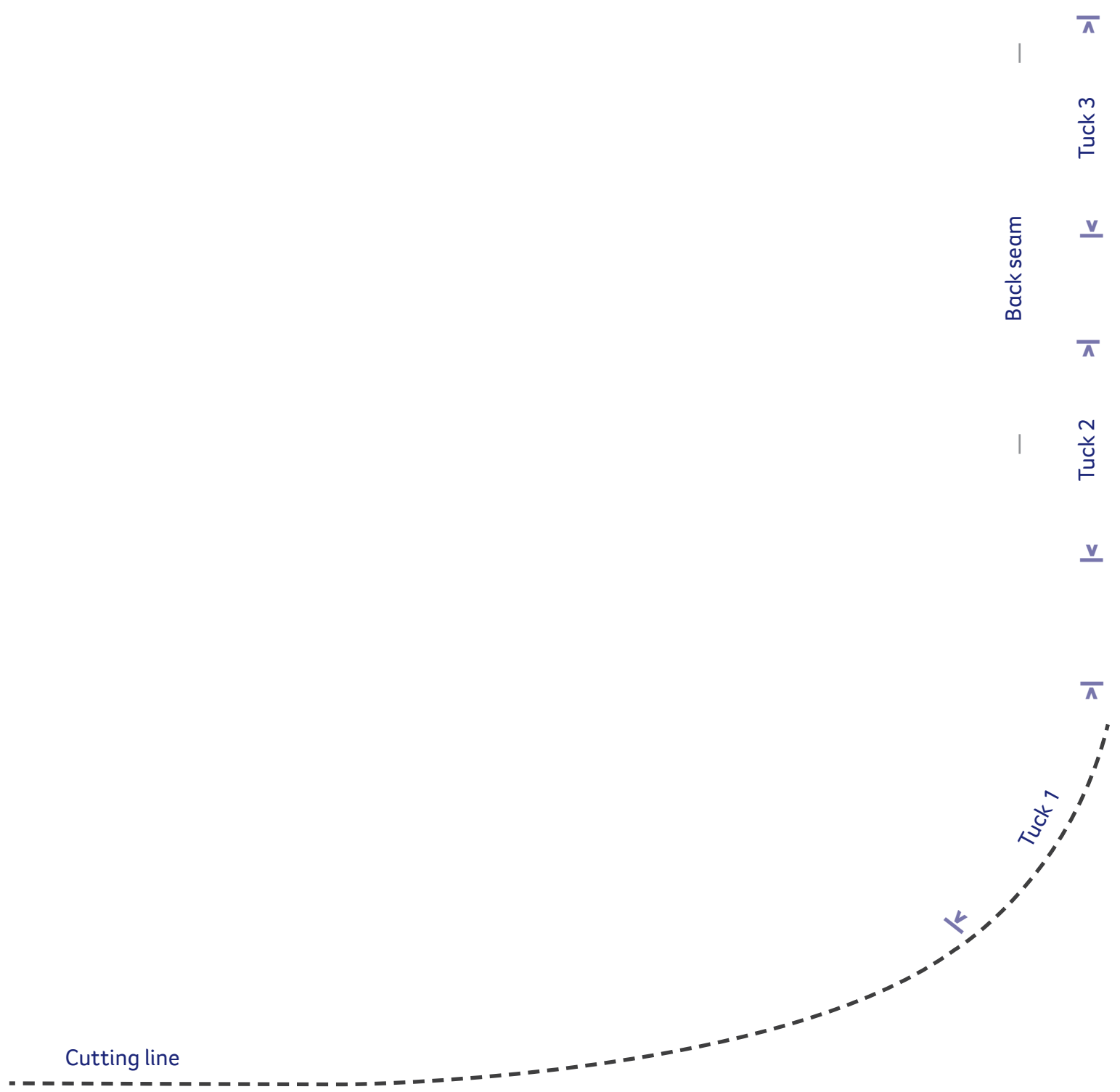
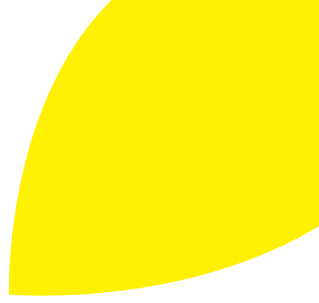
- Fold the tab in half with right sides together. Stitch along the length. Turn the tab right side out and make sure the seam is at the centre of the underside



- From the outside of the turban, slip the tab through the opening in the front seam of the turban. With the seam facing up, sew the ends of the tab together, then turn the tab so the seam and ends are inside the tab.
- From the outside, slip the tab through the opening in the front seam of the turban. Stitch ends of the tab together. Move the seam of the tab to the inside of the turban.

Pleated and Tucked Turban Turban Pattern

Style 1 with tucks



Cutting line